



PROVO CITY
WATER AND POWER DEPARTMENT

251 WEST 800 NORTH
P. O. BOX 658
PROVO, UTAH 84601
TELEPHONE: 373-7170

August 20, 1973

Tracy H. Hall, Inc.
1190 Columbia Lane
Provo, Utah 84601

Gentlemen:

Recently we revised our policy and installation requirements for electrical services.

For your information, enclosed is a copy of our policy and specifications.

If you have any questions, please call the Engineering Department at Provo City Power, 373-7170, extension 49.

Sincerely,

Glen Spivey
Administrative Assistant

GS:lh

PROVO CITY POWER
POLICY FOR UNDERGROUND SERVICE

MAR 27 1973

CONDOMINIUMS, MOBILE HOME PARKS AND SUBDIVISIONS

A. GENERAL REQUIREMENTS

- (1) The electrical planning shall be approved by Provo City Power.
- (2) The Developer shall sign a guaranty that the Developer will reimburse Provo City Power for any and all additional expense caused by changes in lot size or location, changes in final grade, or power facility location, or damage to electrical equipment, after the approval of the development.
- (3) A fee of \$50.00 per service shall be paid to Provo City Power prior to beginning of installation of power facilities.
- (4) All installations shall be completed in accordance with Provo City Power Underground Service Specifications.

B. PROVO CITY POWER RESPONSIBILITY

Provo City Power will furnish and install the complete underground system except the meter socket and service conduit.

C. CUSTOMER OR DEVELOPER RESPONSIBILITY

The Customer or Developer shall furnish and install the meter socket and service conduit as shown on Provo City Power specifications.

SINGLE SERVICE 200 AMPS OR SMALLER IN OVERHEAD DISTRIBUTION AREA

A. CUSTOMER OR DEVELOPER RESPONSIBILITY

- (1) Owner shall obtain and present to Provo City Power any easements necessary for installation and maintenance of service.
- (2) Owner shall furnish and install meter socket and service conduit as shown on Provo City Power specifications.

SERVICE LARGER THAN 200 AMPS

A. GENERAL REQUIREMENTS

- (1) Any service larger than 200 amps shall be underground.
- (2) Any service 400 amps or smaller shall be secondary unless specified otherwise by Provo City Power.
- (3) Any service larger than 400 amps shall be primary unless specified otherwise by Provo City Power.

PRIMARY SERVICE

A. CUSTOMER'S RESPONSIBILITY

- (1) Furnish and install transformer vault or concrete pad as required by Provo City Power.
- (2) Furnish and install a 4" conduit with a #9 pull wire from vault or pad to primary connection point on service pole. (Provo City Power will assist installation of last length of conduit on service pole.)
- (3) Furnish and install secondary connections to transformers.
- (4) Furnish and install required metering conduit and install city furnished meter socket on outside wall of building.
- (5) Install city furnished C. T.'s and C. T. cabinet if required.

B. PROVO CITY POWER'S RESPONSIBILITY

- (1) Furnish and install transformers.
- (2) Furnish and install transclosure, provided customer will reimburse Provo City Power cost of transclosure.
- (3) Furnish and install primary wire and primary connections.
- (4) Furnish and install P. T.'s.
- (5) Furnish C. T.'s and C. T. cabinet if required.
- (6) Furnish meter socket.
- (7) Furnish and install meter.

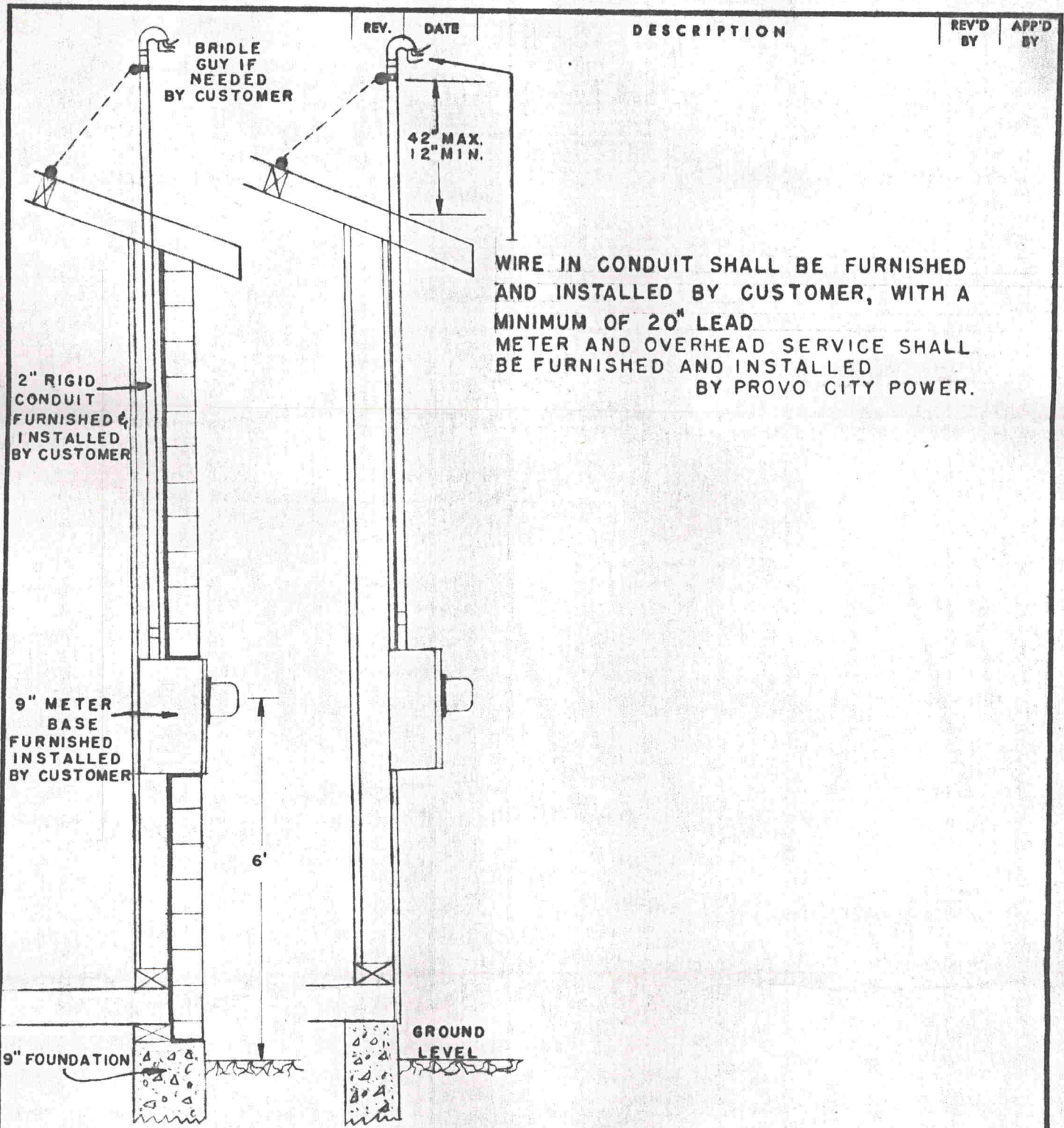
SECONDARY SERVICE

A. CUSTOMER'S RESPONSIBILITY

- (1) Furnish and install wire and conduit from building to connection point on service pole (Provo City Power will assist installation of last length of conduit on service pole.)
- (2) Connect service at building and furnish connectors for connection at service pole. (Provo City Power will install.)
- (3) Furnish and install required metering conduit and install city furnished meter socket on outside wall of building.
- (4) Install city furnished C. T. cabinet and C. T.'s.

B. PROVO CITY POWER'S RESPONSIBILITY

- (1) Assist installation of last length of conduit on service pole.
- (2) Furnish and install F. T.'s.
- (3) Furnish C. T. cabinet and C. T.'s.
- (4) Furnish meter socket.
- (5) Furnish and install meter.
- (6) Furnish and install transformers.

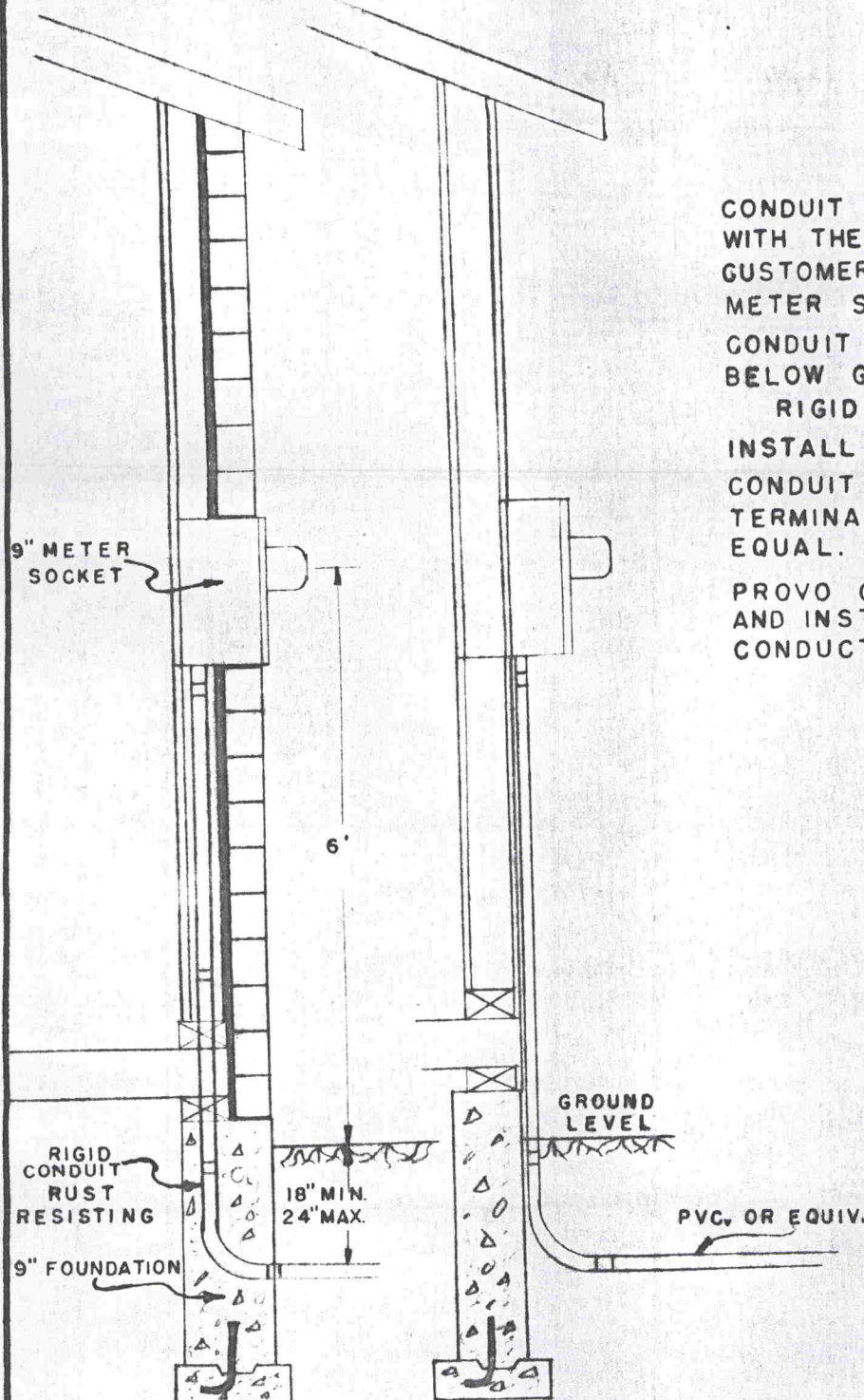


FIND NO.	QUAN.	DESCRIPTION	PART NUMBER
PROVO CITY CORPORATION		DRAWING NUMBER	REV.
ELECTRIC DEPARTMENT		A-30049	
OVERHEAD SERVICE SPECIFICATIONS			
SCALE: NONE			
DRAWN BY: GEO. MORSE			
DATE: 3/1/73			
CHECKED BY: LCM			
APPROVED BY:		J. A. OR W. O. NO.	SHEET OF
		1	5

REV. DATE

DESCRIPTION

REV'D BY APP'D BY



CONDUIT AND WIRE SIZE SHALL COMPLY WITH THE NATIONAL ELECTRICAL CODE. CUSTOMER SHALL FURNISH AND INSTALL METER SOCKET AND CONDUIT.

CONDUIT FROM METER SOCKET TO BELOW GROUND LEVEL, SHALL BE RIGID AND RUST RESISTING.

INSTALL NO.9 PULL WIRE IN CONDUIT. CONDUIT FROM BUILDING TO SERVICE TERMINAL SHALL BE RIGID PVC OR EQUAL.

PROVO CITY POWER WILL FURNISH AND INSTALL METER AND SERVICE CONDUCTORS.

FLUSH MOUNT

SURFACE MOUNT

FIND NO. QUAN.

DESCRIPTION

PART NUMBER

PROVO CITY CORPORATION

ELECTRIC

DEPARTMENT

DRAWING NUMBER
A-30049

REV.

**UNDERGROUND SERVICE SPECIFICATIONS
FOR CONDOMINIUMS-MOBILE HOME PARKS
AND SUBDIVISIONS**

SCALE: NONE

DRAWN BY: GEO. MORSE

DATE: 3/1/73

CHECKED BY: LCM

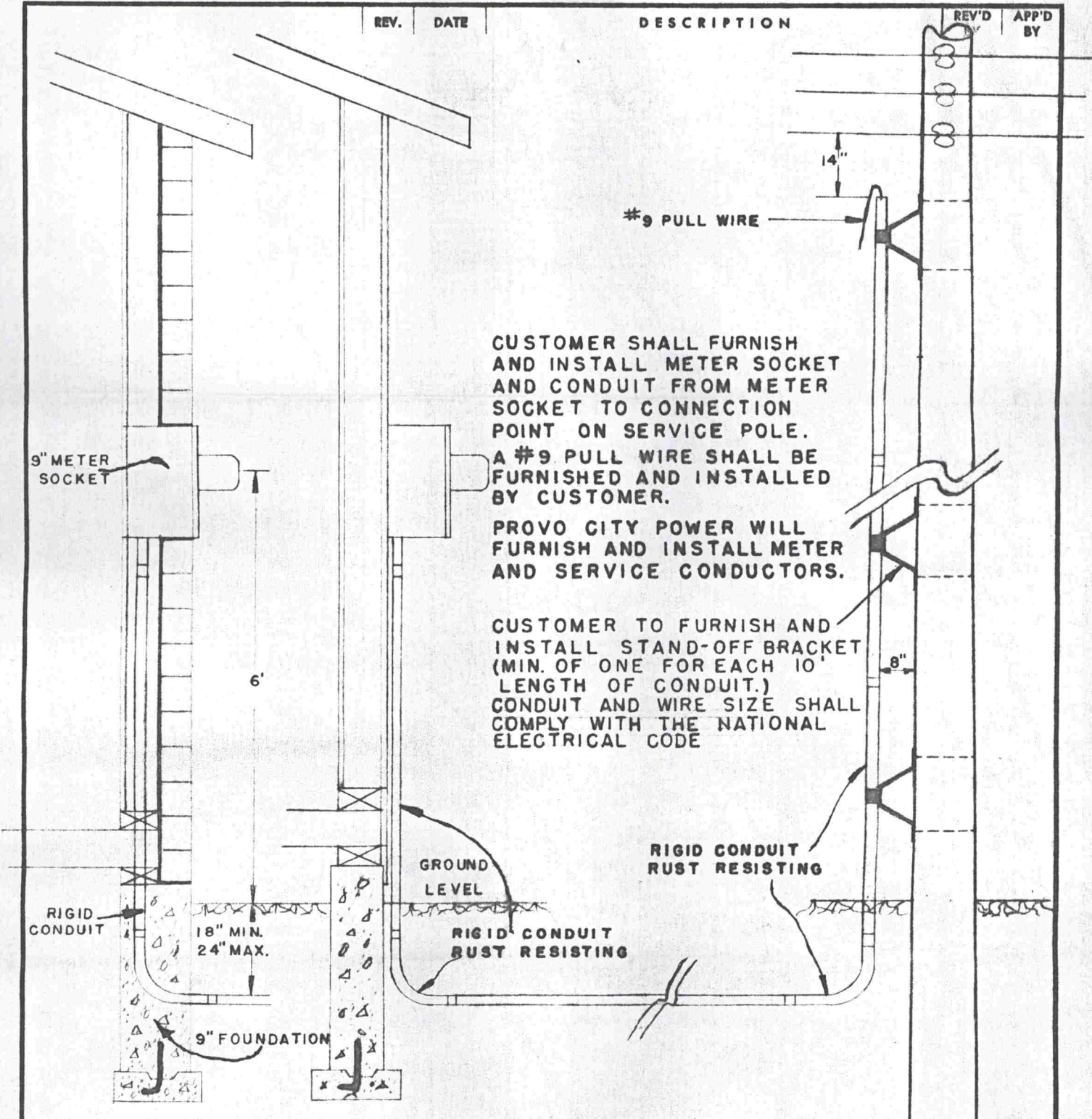
J. A. OR W. O. NO.

SHEET
2

OF
5

APPROVED BY:

REV.	DATE	DESCRIPTION	REV'D BY	APP'D BY
------	------	-------------	----------	----------



CUSTOMER SHALL FURNISH AND INSTALL METER SOCKET AND CONDUIT FROM METER SOCKET TO CONNECTION POINT ON SERVICE POLE. A #9 PULL WIRE SHALL BE FURNISHED AND INSTALLED BY CUSTOMER.

PROVO CITY POWER WILL FURNISH AND INSTALL METER AND SERVICE CONDUCTORS.

CUSTOMER TO FURNISH AND INSTALL STAND-OFF BRACKET (MIN. OF ONE FOR EACH 10' LENGTH OF CONDUIT.) CONDUIT AND WIRE SIZE SHALL COMPLY WITH THE NATIONAL ELECTRICAL CODE

FINO NO.	QUAN.	DESCRIPTION	PART NUMBER
----------	-------	-------------	-------------

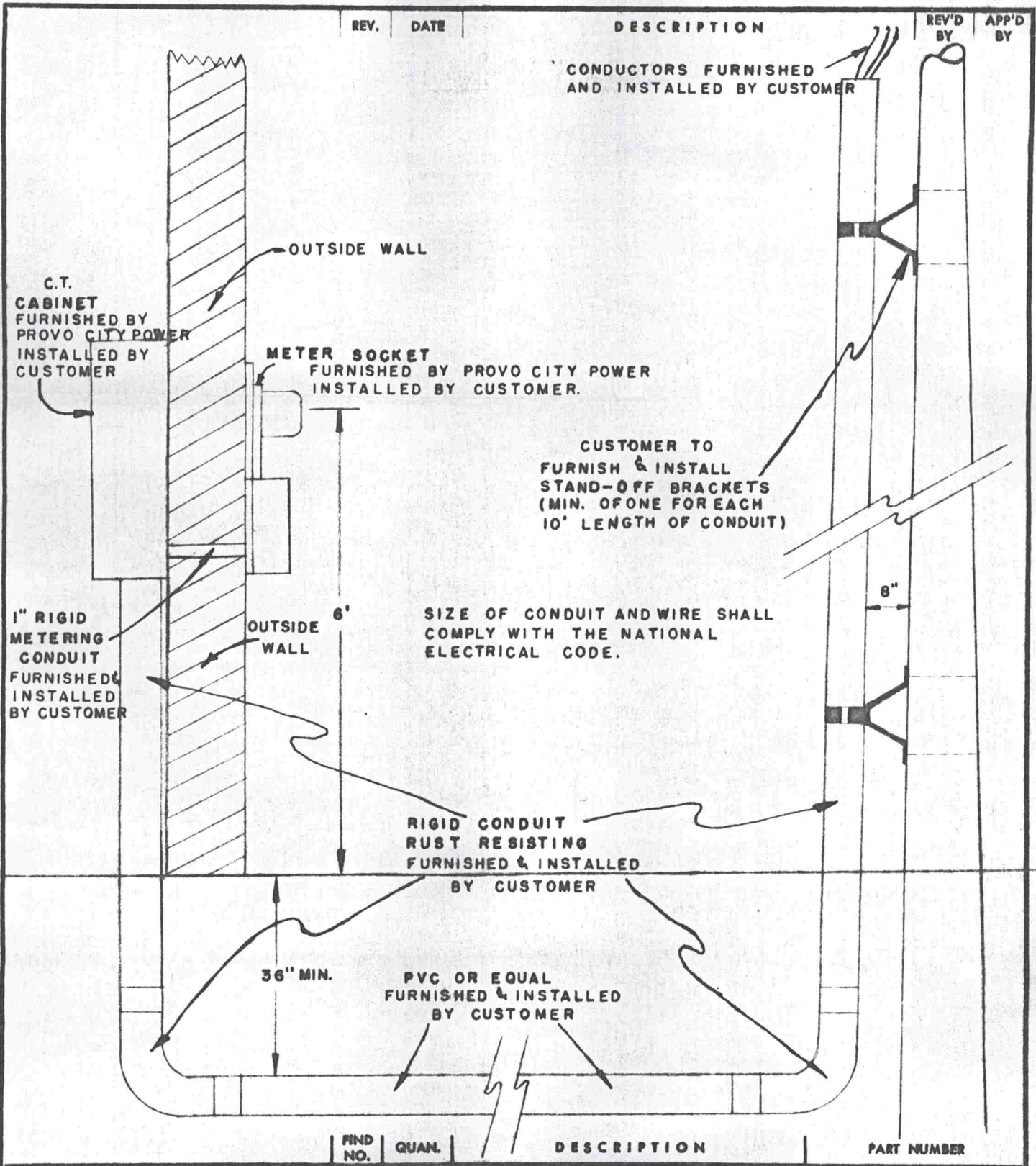
PROVO CITY CORPORATION

ELECTRIC DEPARTMENT

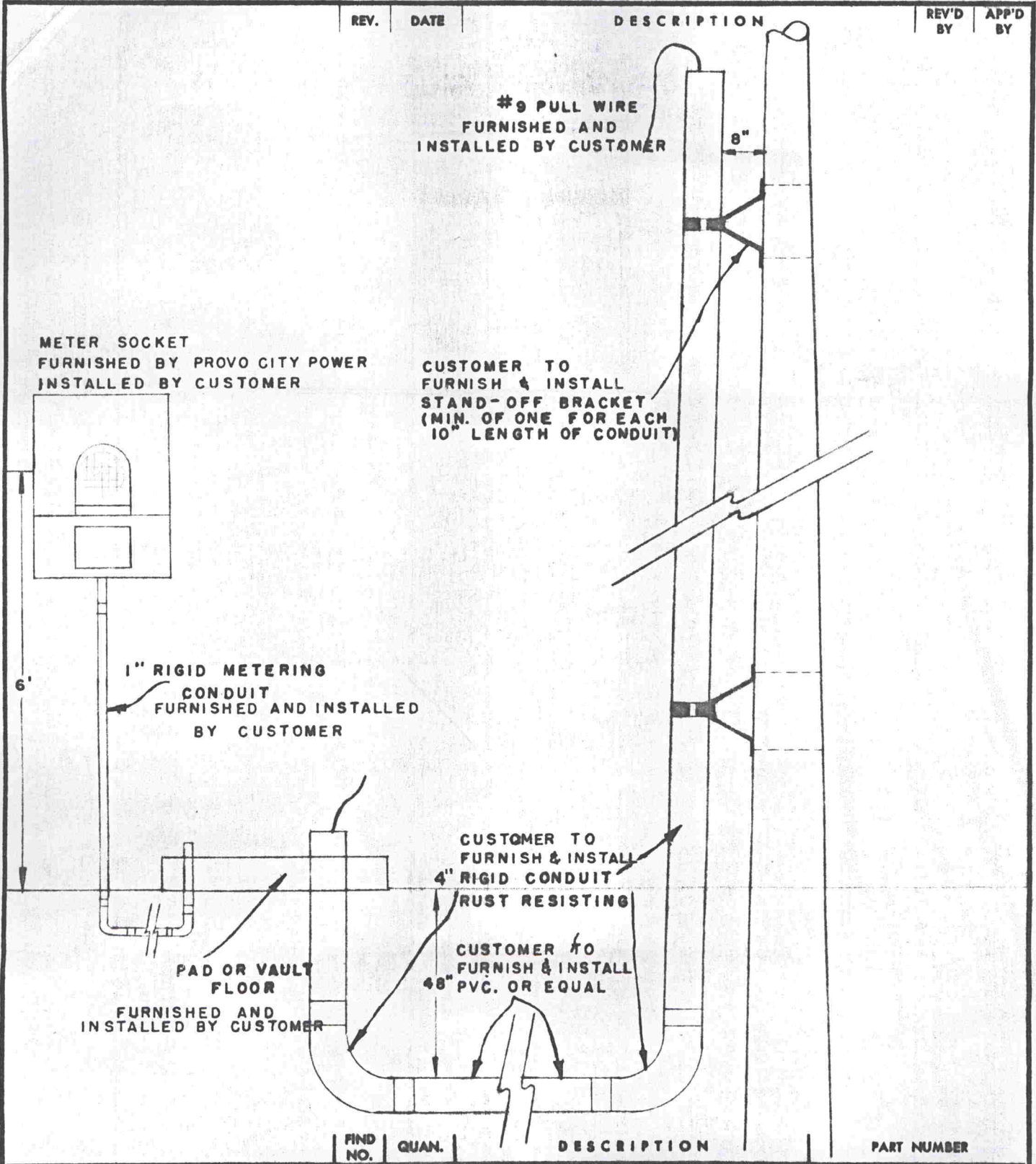
SINGLE SERVICE 200 AMPS OR SMALLER
IN OVERHEAD DISTRIBUTION AREA.

DRAWING NUMBER	REV.
A-30049	
SCALE: NONE	
DRAWN BY: GEO. MORSE	
DATE: 3/5/73	
CHECKED BY: LCM	
J. A. OR W. O. NO.	SHEET OF
	3 5

APPROVED BY: _____



FIND NO.	QUAN.	DESCRIPTION	PART NUMBER
PROVO CITY CORPORATION ELECTRIC DEPARTMENT			
SECONDARY SERVICE LARGER THAN 200 AMPS. SPECIFICATION		DRAWING NUMBER A-30049	REV.
		SCALE: NONE	DRAWN BY: GEO. MORSE
		DATE: 3/8/73	CHECKED BY: LCM
APPROVED BY: _____		J. A. OR W. O. NO.	SHEET 4 OF 5



PROVO CITY CORPORATION

ELECTRIC DEPARTMENT

PRIMARY UNDERGROUND SERVICE SPECIFICATIONS

DRAWING NUMBER
A-30049

REV.

SCALE: NONE

DRAWN BY: GEO. MORSE

DATE: 3/7/73

CHECKED BY: LCM

J. A. OR W. O. NO.

SHEET
5

OF
5

APPROVED BY: _____